



DOODLE DEN

Make a den, pick up a pencil and explore the museum's collections through scribbling, sketching and silliness.



Great for ages 5 to adults

People's History Museum, Left Bank, Spinningfields, Manchester M3 3ER



This banner was made in 1988 for the group North West Campaign for Lesbian and Gay Equality. It was used in protests against a law called Section 28 which banned schools from 'promoting homosexuality'.

Homosexuality is when people are attracted to other people of the same gender, it is also referred to as gay. Today children at school are taught about different types of love and relationships.

The activities in this resource celebrate community, diversity and pride.

Make a den out of things you have around the house such as a sofa, dining room chairs, a bed sheet and blankets.

Fill with comfy cushions and settle in for some Doodle Challenges...



We want to see your doodling!
Tag us on Instagram, Twitter and Facebook
@PHMMcr #DoodleDen



This banner was used at a protest outside Manchester Town Hall in 1988.

The protest showed defiance against discrimination - being treated differently because of who you are.

20,000 people attended the protest, showing support for the gay community and celebrating their identity.

Doodle Challenge: doodle a crowd

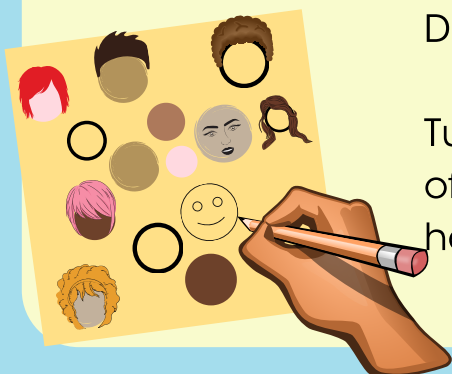


How many people do you think you can fit in your den?

Can you imagine what a crowd of 20,000 people looks like?

Draw lots of circles.

Turn each circle into a different member of a crowd by giving them faces and hair, each with their own unique style.



We want to see your doodling!

Tag us on Instagram, Twitter and Facebook

@PHMMcr #DoodleDen



At the bottom of the banner it says:

'Lesbians & Gay Men Out and Proud'

These words were chosen to show that the group are proud of who they are. They refused to hide their identity and they fought against discrimination.

Doodle Challenge: powerful words

Draw the word 'P R O U D' in big fun letters.

Think about:

- What does the word proud mean?
- What makes you proud?

Write or doodle pictures of your answers.

Words can mean different things to different people.

Compare your doodles with someone else's to see if there are any similarities or differences.





Rainbows have been used by many communities as a symbol of hope and solidarity.

The rainbow flag has been used widely as a symbol for the LGBT+ community.

Where else have you seen a rainbow as a symbol?

Doodle Challenge: draw a rainbow

Use sticky tape to attach different coloured pens together. This will allow you to draw in every colour at the same time.

Fill your piece of paper with a rainbow, shapes and swirls.

Attach your image to the wall of your den or in the window of your home for people to see.



We want to see your doodling!

Tag us on Instagram, Twitter and Facebook

@PHMMcr #DoodleDen



On the banner we can see large words and bright colours that can be read from far away, in busy crowds.

In the centre is a memorable symbol using the London Underground sign with the words 'Never Going Underground'.

Doodle Challenge: design your own banner



Design your own banner to celebrate a community you are part of.

This might be your family, school, sports club or something else.

What words and images would you use to represent your community?

You could hang your banner up inside your den.

We want to see your doodling!

Tag us on Instagram, Twitter and Facebook

@PHMMcr #DoodleDen