

PEOPLE'S HISTORY MUSEUM
VENUE HIRE



venuehire@phm.org.uk
+44 (0) 161 838 9190

EVENTS AT

PEOPLE'S HISTORY MUSEUM

At People's History Museum (PHM) we offer a mix of heritage and contemporary multi-use spaces that can cater for small workshop events to large conferences and celebrations. The museum's buildings house galleries, an archive study centre, conservation studio and cafe bar; all of which can be incorporated into bespoke event experiences.

In choosing PHM for your event you will not only benefit from a unique venue packed with heritage, but you'll be contributing to something bigger: to support the museum's social mission as a free museum, dedicated to preserving and sharing stories of change that empower people to make a difference.



EVENTS AT

PEOPLE'S HISTORY MUSEUM

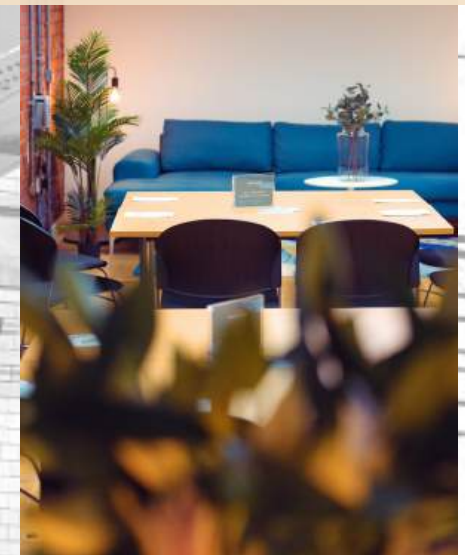
Elevate your event by hosting it at PHM. With a choice of industrial heritage backdrops and contemporary, sophisticated spaces available for your bespoke event.



Working Breakfasts
Workshops
Conferences

Work Parties
Evening Receptions
Wine Tastings

Award Ceremonies
Trade Shows
Filming & Photoshoots



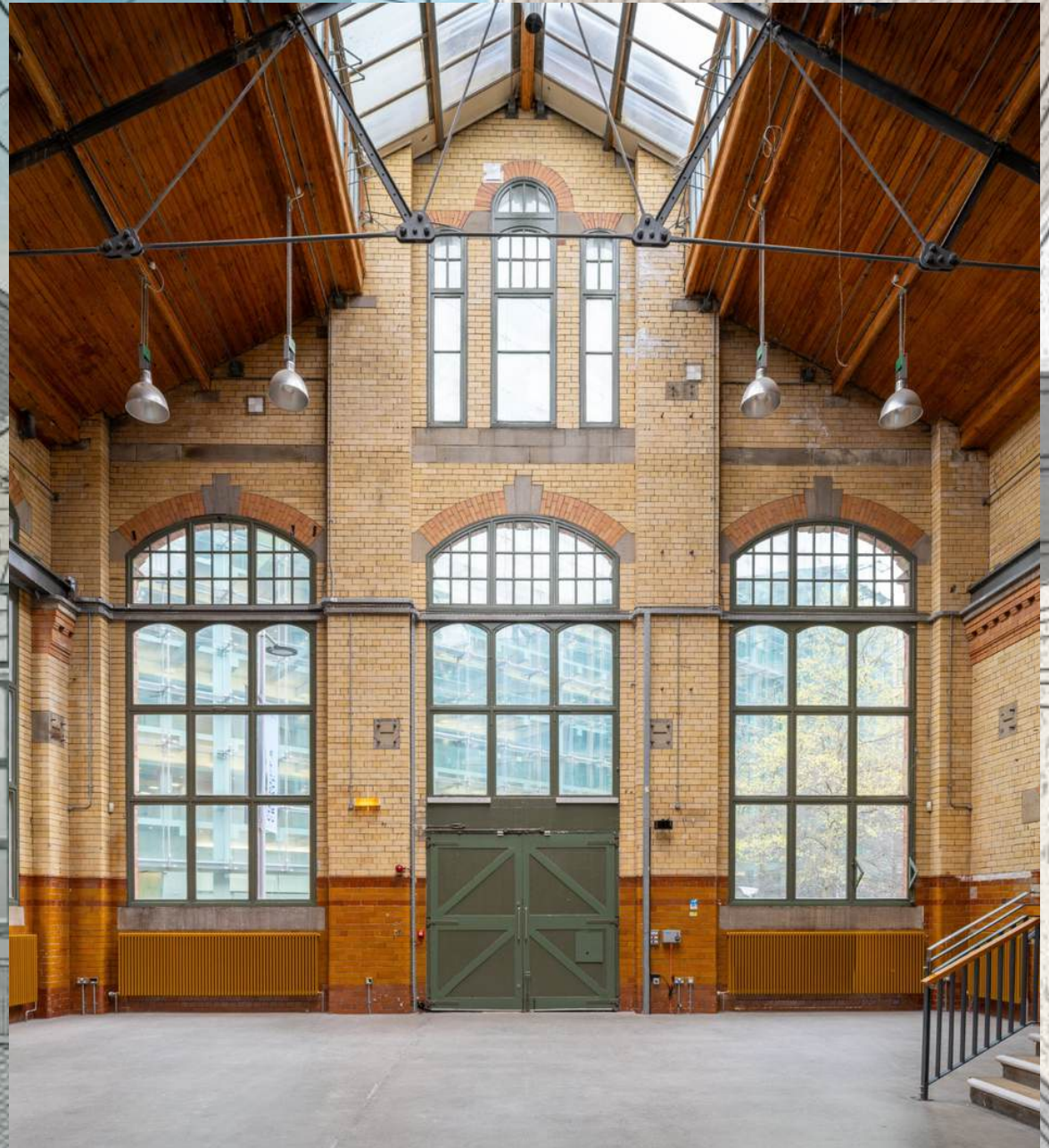
ENGINE HALL

PEOPLE'S HISTORY MUSEUM

The largest of the museum's Venue Hire spaces; the brick and terracotta Engine Hall features vast arched windows, a vaulted glass ceiling, polished concrete floor and other original heritage features including colourful Pilkington tiles and intricate metal work.

Housed in a historic Grade II listed Pump House designed by Manchester's first City Architect, Henry Price (1867-1944), it is a Manchester landmark that once provided power across the city; from cotton mills and factories, to winding the Town Hall clock and raising the curtains of the Opera House.

The Engine Hall is an ideal space for hosting engaging conferences, sophisticated dinners, or customised events tailored to your preferences.



ENGINE HALL

PEOPLE'S HISTORY MUSEUM

Maximum capacities
Cabaret: 90 people
Lecture theatre: 150 people
Dining: 120 people
Standing: 200 people

Dimensions:
16m x 9.5m | 152 square metres
Bespoke set-ups available



ENGINE HALL

PEOPLE'S HISTORY MUSEUM

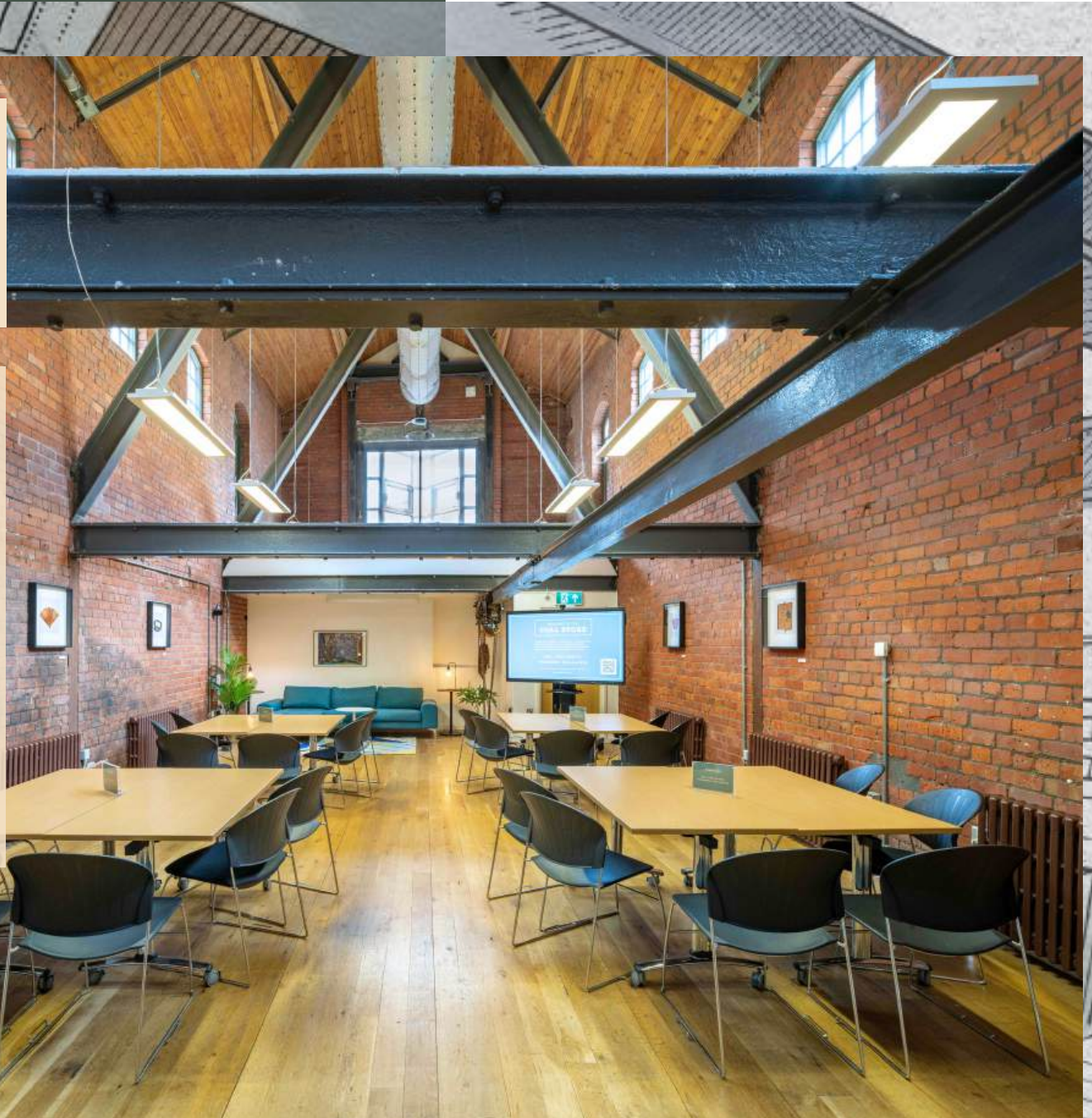
Daytime hire *DDR rates available	Full day: Access from 9:00am - 5:00pm	£1,475 (plus VAT)
	Half day: Access from 9:00am - 1:00pm / 1:00pm - 5:00pm	£950 (plus VAT)
	Additional hours: 8:00am - 9:00am or 5:00pm - 6:00pm	£175 per hour (plus VAT)
Evening hire	Access from 5:00pm - 9:00pm	£1,595 (plus VAT)
	Access from 5:00pm - 11:00pm	£1,995 (plus VAT)
	Additional hours post 11:00pm	£200 per hour (plus VAT)

COAL STORE

PEOPLE'S HISTORY MUSEUM

The restored redbrick Coal Store features a spacious double height vaulted iron and timber ceiling and other original heritage features.

It offers a completely private, intimate space which is ideal for meetings, workshops, and breakout spaces. Its versatility allows for a range of layouts and configurations, catering to both formal and informal gatherings.



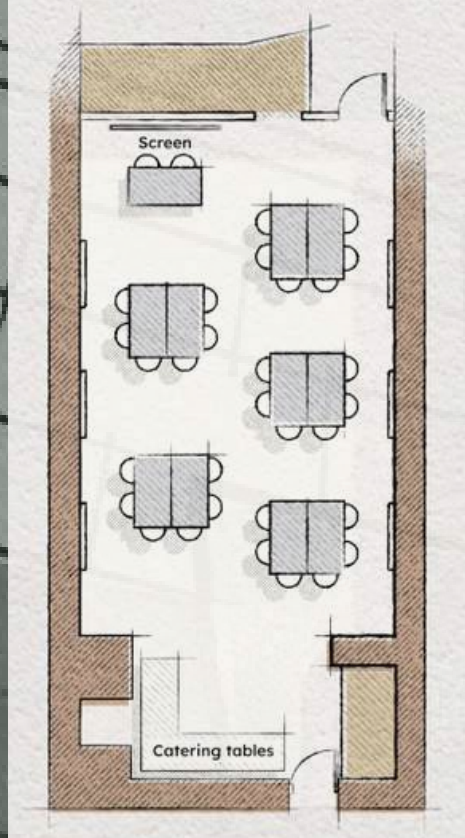
COAL STORE

PEOPLE'S HISTORY MUSEUM

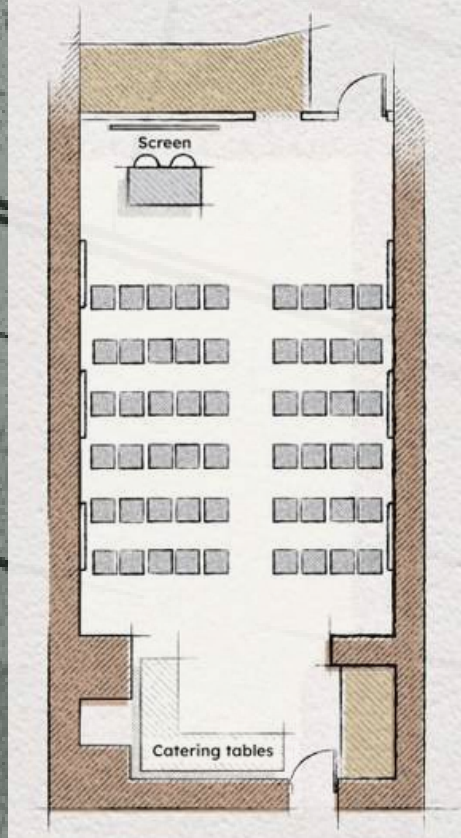
Maximum capacities
Workshop: 36
Cabaret: 30 people
Lecture theatre: 50 people
Reception: 50
U-Shape: 20

Boardroom: 24 people
Standing: 65 people
Dimensions:
12.4m x 5.9m | 70 square metres
Bespoke set-ups available

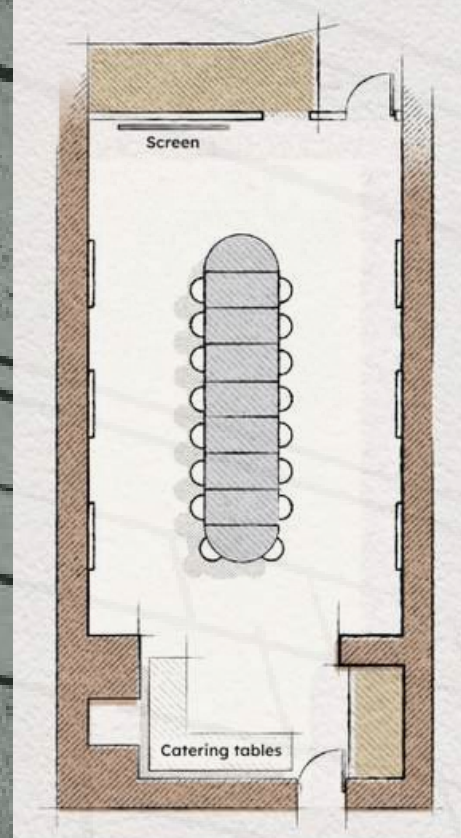
Cabaret



Lecture theatre



Boardroom



COAL STORE

PEOPLE'S HISTORY MUSEUM

Daytime hire *DDR rates available	Full day: Access from 9:00am - 5:00pm	£525 (plus VAT)
	Half day: Access from 9:00am - 1:00pm / 1:00pm - 5:00pm	£395 (plus VAT)
	Additional hours: 8:00am - 9:00am or 5:00pm - 6:00pm	£175 per hour (plus VAT)
Evening hire	Access from 5:00pm - 9:00pm	£795 (plus VAT)
	Access from 5:00pm - 11:00pm	£1,095 (plus VAT)
	Additional hours post 11:00pm	£200 per hour (plus VAT)

RIVERSIDE ROOM

PEOPLE'S HISTORY MUSEUM

The Riverside Room is a spacious, informal conference space designed to offer a relaxed yet professional environment for your meetings and events.

Located just off the museum foyer, next to our in-house cafe and with access to its own private riverside terrace, your event can enjoy stunning city views across the River Irwell, bathed by natural daylight.

The Riverside Room lends itself to an array of different events, whether it be a lecture style conference, drinks reception or a relaxed team lunch meeting.



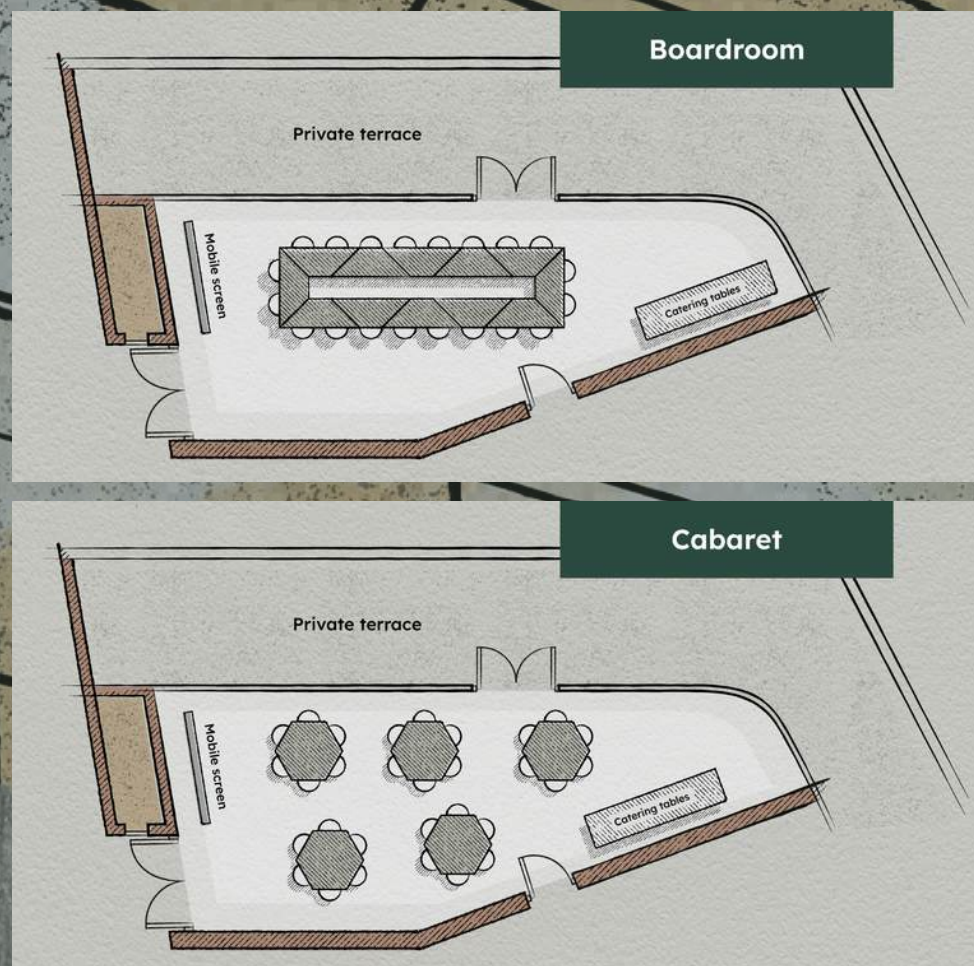
RIVERSIDE ROOM

PEOPLE'S HISTORY MUSEUM

Maximum capacities
Workshop: 36
Cabaret: 30 people
Lecture theatre: 50 people
Reception: 50
U-Shape: 20

Boardroom: 26 people
Standing: 65 people

Dimensions:
50 square metres
Bespoke set-ups available



RIVERSIDE ROOM

PEOPLE'S HISTORY MUSEUM

Daytime hire *DDR rates available	Full day: Access from 9:00am - 5:00pm	£600 (plus VAT)
	Half day: Access from 9:00am - 1:00pm / 1:00pm - 5:00pm	£400 (plus VAT)
	Additional hours: 8:00am - 9:00am or 5:00pm - 6:00pm	£175 per hour (plus VAT)
Evening hire	Access from 5:00pm - 9:00pm	£850 (plus VAT)
	Access from 5:00pm - 11:00pm	£1.295 (plus VAT)
	Additional hours post 11:00pm	£200 per hour (plus VAT)

Vanilla IN ALLSEASONS CATERING

Catering is provided by Vanilla in Allseasons, one of Cheshire's leading event caterers, renowned for exceptional food, seamless service, and a truly personal approach.

The team deliver bespoke dining experiences designed to impress – whether it's a corporate reception, awards dinner, daytime conference, or private celebration.

Vanilla in Allseasons take pride in using the freshest, locally sourced ingredients to create seasonal menus that reflect your event's style and purpose. From energising working lunches and creative canapés to formal banquets and relaxed buffet spreads, every dish is crafted with care and attention to detail.

Their professional and friendly team ensure every element of the catering runs smoothly, allowing you to focus on your guests and enjoy a memorable event.



FIND US

PEOPLE'S HISTORY MUSEUM

All central Manchester train stations and tram stations are within walking distance:

- 23 minute walk from Manchester Piccadilly Station
- 20 minute walk from Oxford Road Station
- 11 minute walk from St. Peter's Square Metrolink

Parking can be found locally at:

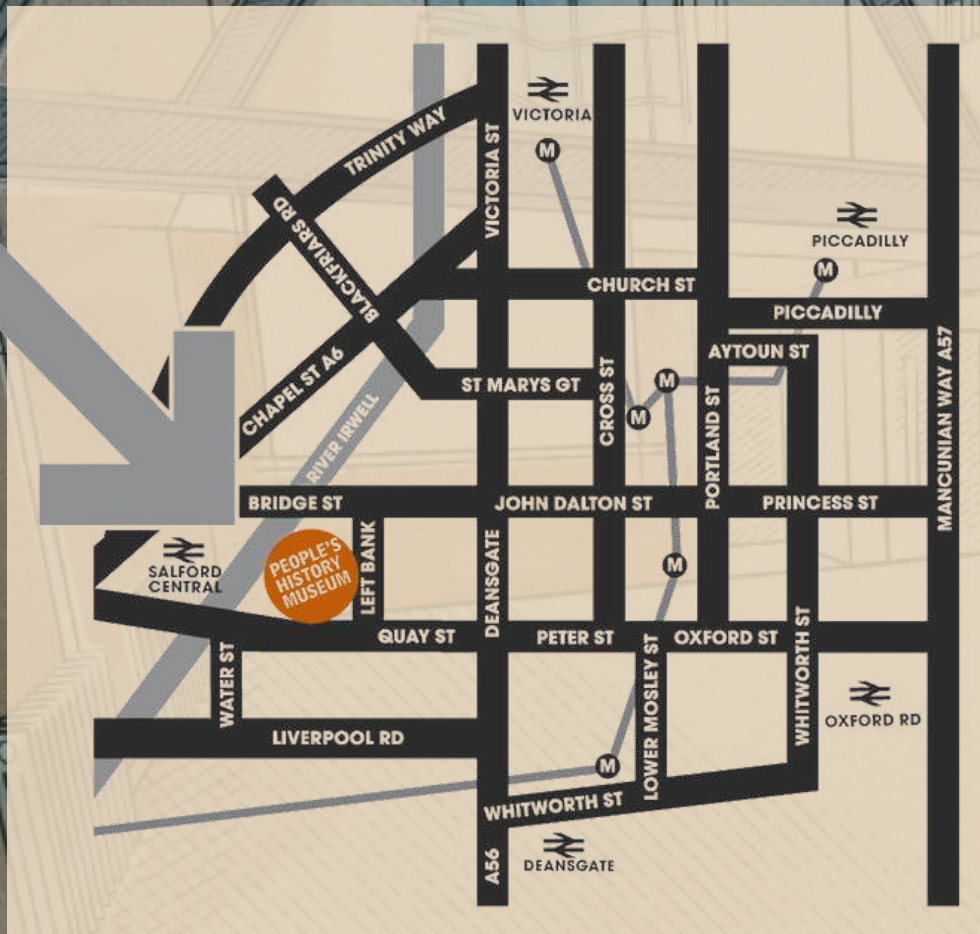
- Bridge Street, M3 5AH (1 min walk)
- Spinningfields NCP, M3 3BE (4 min walk)

[You can find our accessibility info here](#)

If you think PHM could be the right fit for your event, please get in touch!

venuehire@phm.org.uk
+44 (0) 161 838 9190
www.phm.org.uk/hire

People's History Museum
Left Bank
Spinningfields
Manchester
M3 3ER



TESTIMONIALS

PEOPLE'S HISTORY MUSEUM

“

The PHM staff were great at communicating and responsive to all queries. They were so helpful and helped us work to find easy solutions for our event to make sure everything flowed smoothly.

The space is so beautiful and spacious - and being able to add on guided tours of the galleries was such a great treat!”

UK Registrars Group

“PHM was a beautiful venue, perfect for our young union leaders to learn in. The staff were fantastic, very helpful and so so lovely.

An absolute credit to the museum and you can tell the extraordinarily high level of care the staff have for the museum by how well it is presented.”

Prospect

“The team was incredibly helpful throughout the planning and hosting of the event. Everything was thought about and the event went incredibly smoothly.

Garden Court North Chambers

”